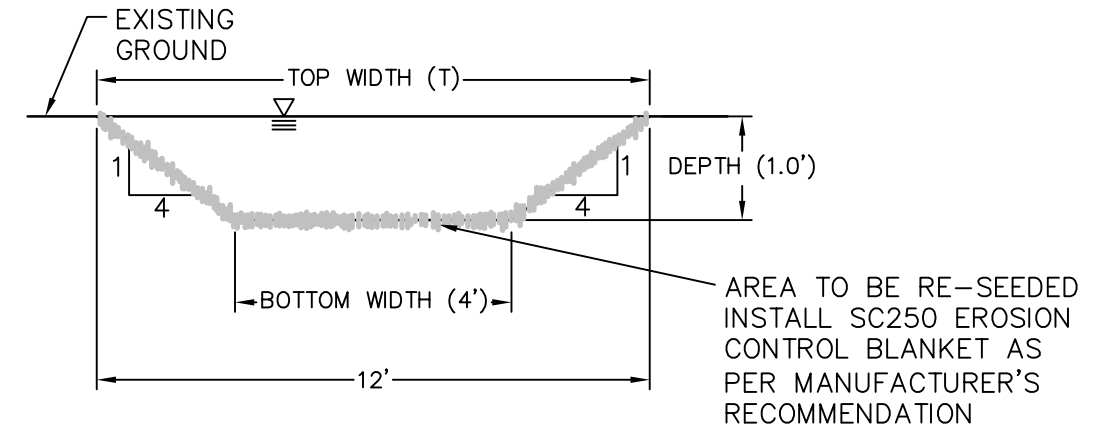
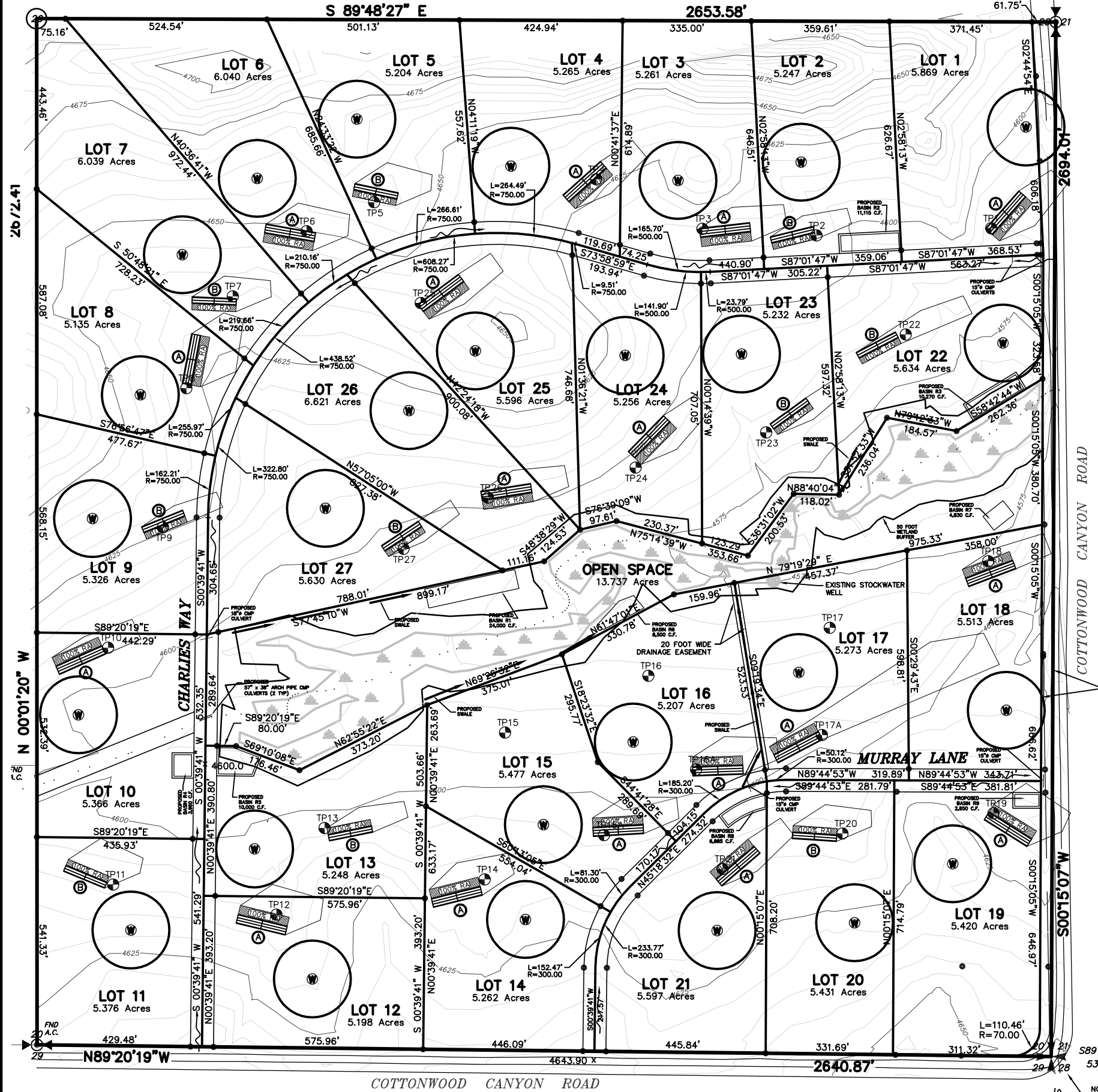
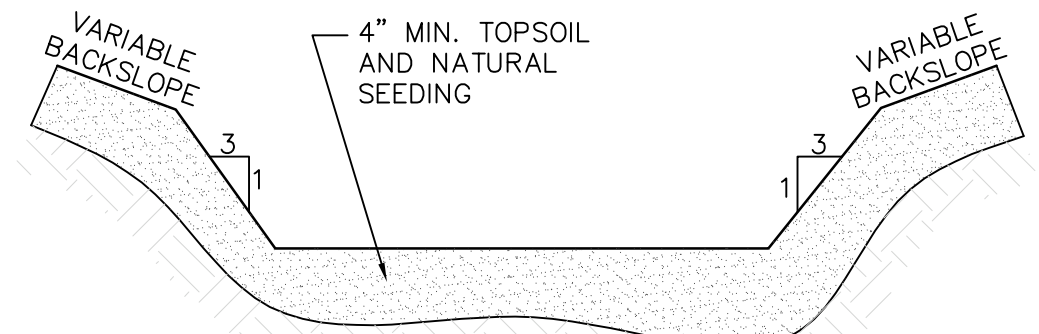


STORMWATER PLAN MILLIGAN CANYON ESTATES

SE $\frac{1}{4}$ SECTION 20, T2N, R1W, P.M.M., JEFFERSON COUNTY, MONTANA



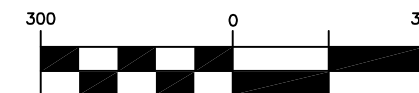
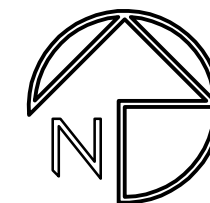
1 SWALE SECTION
SCALE: NTS



NOTES

-SEE SITE PLAN FOR POND SIZING

2 RETENTION POND SECTION
SCALE: NTS



1 inch = 300 ft.

**GASTON ENGINEERING
SURVEYING & SOILS TESTING**

SHEET 8 OF 8
PROJ: 05-509
05-509 MDEQ RSR.DWG
TAB: WWTS B
DATE: DECEMBER 6, 2005

G²
CONSULTING ENGINEERS
LAND SURVEYORS
SOILS TESTING
P.O. BOX 861
BOZEMAN, MT 59771
(406) 586-0588 FAX: 586-0589